



Fulbrook Attendance and Absence Policy

Issue No.	Author or Reviewer	Date Written or Reviewed	Date Approved by FES/PEAP	Date Approved by FGB	Next Review Date
1	Deputy Head Teacher	October 2025	November 2025		October 2026

Contents:

Statement of intent

1. Legal framework
2. Definitions
3. Roles and responsibilities
4. Attendance expectations
5. Absence procedures
6. Attendance register
7. Authorising parental absence requests
8. SEND- and health-related absence
9. Absence in exceptional circumstances
10. Truancy
11. Missing children
12. Attendance intervention
13. Working with parents to improve attendance
14. PA
15. Legal intervention
16. Monitoring and analysing absence
17. Training of staff
18. Monitoring and review

Appendices

- A. Attendance Monitoring Procedures
- B. Attendance Reporting Structure
- C. Attendance Agreement Forms

Statement of intent

Fulbrook believes that to facilitate teaching and learning, good attendance is essential. Students cannot achieve their full potential if they do not regularly attend school.

We understand that barriers to attendance are complex, and that some students find it harder than others to attend school; therefore, we shall continue to prioritise cultivating a safe and supportive environment at school, as well as strong and trusting relationships with students and parents.

We take a whole-school approach to securing good attendance and recognise the impact that our efforts in other areas – such as the curriculum, behaviour standards, bullying, SEND support, pastoral support, and the effective use of resources such as student premium – can have on improving student attendance.

We are committed to:

- Promoting and modelling high attendance and its benefits.
- Ensuring equality and fairness for all.
- Intervening early and working with other agencies to ensure the health and safety of our students.
- Building strong relationships with families to overcome barriers to attendance.
- Working collaboratively with other schools in the area, as well as other agencies.
- Ensuring parents follow the framework set in section 7 of the Education Act 1996, which states that the parent of every child of compulsory school age shall cause them to receive efficient full-time education suitable to their age, ability and aptitude, and to any SEND they may have, either by regular attendance at school or otherwise.
- Ensuring our attendance policy is clear and easily understood by all staff, parents and students.
- Regularly monitoring and analysing attendance and absence data to identify students or cohorts that require more support.

The member of staff in our school who is responsible for attendance is [Ms Sarah-Jayne Collins](#), and can be contacted via scollins@fulbrook.school. Staff, parents and students will be expected to contact this member of staff for queries or concerns about attendance.

1. Legal framework

This policy has due regard to all relevant legislation and statutory guidance including, but not limited to, the following:

- Education Act 1996
- Equality Act 2010
- The Education (Student Registration) (England) Regulations 2006 (as amended)
- DfE (2025) 'Working together to improve school attendance'
- DfE (2025) 'Children missing education'
- DfE (2025) 'Keeping children safe in education 2025'

This policy operates in conjunction with the following school policies:

- Complaints Procedures Policy
- Children Missing Education Policy
- Child Protection and Safeguarding Policy
- Behaviour Policy (Relationships and Rewards)
- SEND Policy
- Supporting Students with Medical Conditions Policy
- Social, Emotional and Mental Health (SEMH) Policy
- Attendance Officer Home Visit Policy
- Students with Additional Health Needs Attendance Policy

2. Definitions

The following definitions apply for the purposes of this policy:

Absence:

- Arrival at school after the register has closed
- Not attending school for any reason

Authorised absence:

- An absence for sickness for which the school has granted leave
- Medical or dental appointments, which unavoidably fall during school time, for which the school has granted leave
- Religious or cultural observances for which the school has granted leave
- An absence due to a family emergency

Unauthorised absence:

- Parents keeping children off school unnecessarily or without reason

- Truancy before or during the school day
- Absences which have never been properly explained
- Arrival at school after the register has closed
- Absence due to shopping, looking after other children or birthdays
- Absence due to day trips and holidays in term-time which have not been agreed
- Leaving school for no reason during the day

Persistent absence (PA):

- Missing 10 percent or more of schooling across the year for any reason

Severely Absent Students (SA)

- Missing 50 percent or more of schooling across the year for any reason

3. Roles and responsibilities

The governing board has overall responsibility for:

- Monitoring the implementation of this policy and all relevant procedures across the school
- Promoting the importance of good attendance through the school's ethos and policies
- Arranging attendance training for all relevant staff that is appropriate to their role
- Working with the SLT to set goals for attendance and providing support and challenge around delivery against those goals
- Ensuring that this policy, as written, does not discriminate on any grounds including, but not limited to, ethnicity/national origin, culture, religion, gender, disability, or sexual orientation
- Handling complaints regarding this policy as outlined in the school's Complaints Procedures Policy
- Having regard to 'Keeping children safe in education' when making arrangements to safeguard and promote the welfare of children
- Ensuring there is a Children Missing Education Policy in place and that this is regularly reviewed and updated

The headteacher is responsible for:

- The day-to-day implementation and management of this policy and all relevant procedures across the school
- Appointing a member of the SLT to the attendance lead role

- Ensuring all parents are aware of the school's attendance expectations and procedures
- Ensuring that every student has access to full-time education and will act as early as possible to address patterns of absence

Staff are responsible for:

- Following this policy and ensuring students do so too
- Ensuring this policy is implemented fairly and consistently
- Modelling good attendance behaviour
- Using their professional judgement and knowledge of individual students to inform decisions as to whether any welfare concerns should be escalated
- Where designated, taking the attendance register at the relevant times during the school day.

The SLT attendance lead is responsible for:

- The overall strategic approach to attendance in school
- Developing a clear vision for improving attendance
- Monitoring attendance and the impact of interventions
- Analysing attendance data and identifying areas of intervention and improvement
- Communicating with students and parents regarding attendance
- Following up on incidents of persistent poor attendance
- Informing the LA of any student being removed from the admission and attendance registers

Parents are responsible for:

- Providing accurate and up-to-date contact details
- Providing the school with more than one emergency contact number
- Updating the school if their details change
- The attendance of their children at school
- Promoting good attendance with their children

Students are responsible for:

- Attending their lessons and any agreed activities when at school
- Arriving punctually to lessons when at school

4. Attendance expectations

Regular attendance is vital to every student's education, progress, and wellbeing. Fulbrook is committed to working in partnership with families to promote good attendance and to ensure that all students are safe and supported.

In line with our **Attendance Policy**, if a student is absent without explanation, or if there are ongoing attendance concerns, the school may conduct a **home visit**. This is part of our duty to safeguard and promote the welfare of all students.

The purpose of a home visit is to:

- Check on the **welfare and safety** of the student;
- Understand any **barriers to attendance**, such as health, personal, or family circumstances;
- Offer **support, guidance, or referrals** to relevant services where needed; and
- Reinforce the importance of regular school attendance and engagement in learning.

Home visits are conducted by two members of staff and, where appropriate, in partnership with the school's **Safeguarding, Pastoral and Attendance**.

We value open communication with families and encourage parents or carers to contact the school at the earliest opportunity if there are any difficulties affecting attendance. Working together helps us to ensure that every student is safe, supported, and able to achieve their best.

The school has high expectations for students' attendance and punctuality and ensures that these expectations are communicated regularly to parents and students.

Students will be expected to:

- Attend school every day they are required to be at school, for the full day
- Attend school punctually
- Attend every timetabled lesson
-

The school day starts at **08:30**, and students will be in their classroom, ready to begin lessons at this time; therefore, students will be expected to be on the school site by **08:25**. Students will have a morning break at **10:55**, which will last until **11:15**, and a lunch break at **13:15**, which will last until **13:55** – students will be expected to have returned from each break and be ready to recommence learning at the stated times.

Registers will be taken as follows throughout the school day:

- The morning register will be marked by **08:45**. Students will receive a late mark if they are not in their classroom by this time. Students attending after this time

will receive a mark to show that they were on site, but this will count as a late mark

- The morning register will close at **08:45**. Students will receive a mark of absence if they do not attend school before this time
- The afternoon register will be marked by **13:55**. Students will receive a late mark if they are not in their classroom by this time
- The afternoon register will close at **14:00**. Students will receive a mark of absence if they are not present

Class teachers will also take registers at the start of each lesson period to ensure that students are attending all timetabled lessons. These registers will be analysed alongside formal registers in line with the section of this policy.

Students will be encouraged to communicate any concerns related to attendance and absence as soon as possible to the relevant member of staff.

5. Absence procedures

Parents will be required to report their child's absence via the Studybugs app– they will be expected to provide an explanation for the absence and an estimation of how long the absence will last, e.g. one school day. In the instance of the Studybugs app not working, parents should contact the school office via telephone or Arbor before 08:30 on the first day and each subsequent day of their child's absence

Where a student is absent, and their parent has not contacted the school by **08:30** to report the absence, administrative staff will contact the parent via **telephone call** as soon as is practicable on the first day that the student does not attend school.

The school will always follow up any absences in order to:

- Ascertain the reason for the absence
- Ensure the proper safeguarding action is being taken
- Identify whether the absence is authorised or not
- Identify the correct code to use to enter the data onto the school census system

Where a student is absent for more than **three** school days in a row, or more than **ten** school days in **one term**, the student's parent will be expected to provide a signed letter with an explanation for the absence(s).

The school will not request medical evidence in most circumstances where a student is absent due to illness; however, the school reserves the right to request supporting evidence where there is genuine and reasonable doubt about the authenticity of the illness.

In the case of PA/SA, arrangements will be made for parents to speak to the attendance lead. The school will inform the LA, using the mandatory absence alert e-form www.centralbedfordshire.gov.uk/mandatory-absence-alert, of the details of students who fail to attend regularly, or who have missed ten school days or more without authorisation when either threshold is met.

If a student's attendance drops below **90%**, the attendance lead will arrange a formal meeting with the student and their parent.

Where a student has not returned to school for ten days after an authorised absence, or is absent from school without authorisation for twenty consecutive school days, the school will remove the student from the admissions register **if** the school and the LA have failed to establish the whereabouts of the student after making reasonable enquiries. This cannot be backdated to the date of the last attendance

6. Attendance register

The school uses [Arbor](#) to keep attendance registers to ensure they are as accurate as possible and can be easily analysed and shared with the appropriate authorities.

Designated staff members will take the attendance register during AM Check in and PM Check out. This register will record whether students are:

- Present
- Absent
- Late

The school will use the national attendance codes to ensure attendance and absence are monitored and recorded in a consistent way. The following codes will be used:

- / = Present in the morning
- \ = Present in the afternoon
- L = Late arrival before the register has closed
- C = Leave of absence granted by the school
- H = Authorised holiday
- E = Excluded but no alternative provision made
- I = Illness
- M = Medical or dental appointments
- R = Religious observance
- [New] S = Study leave
- T = Gypsy, Roma and Traveller absence
- G = Unauthorised holiday
- N = Reason not yet provided

- O = Unauthorised absence
- U = Arrived after registration closed
- D = Dual registered at another educational establishment
- B = Off-site education activity
- J = At an interview with prospective employers, or another educational establishment
- P = Participating in a supervised sporting activity
- V = Educational visit or trip • W = Work experience Y = Exceptional circumstances
- Z = Student not on admission register

When the school has planned to be fully or partially closed, the code ‘#’ will be used for the relevant students who are absent. This code will also be used to record year groups who are not due to attend because the school has set different term dates for different years, e.g. induction days.

All amendments made to the attendance register will include the original entry, the amended entry, the reason for the amendment, the date of amendment and the name and role of the person who made the amendment.

Every entry received into the attendance register will be preserved for **three years**.

7. Authorising parental absence requests

Parents will be required to request certain types of absence in advance. All requests for absence will be overseen by the headteacher – the decision to grant or refuse the request will be at the sole discretion of the headteacher, taking the best interests of the student and the impact on the student’s education into account. The headteacher’s decision is not subject to appeal; however, the school will be sympathetic to requests for absence by parents and will not deny any request without good reason. Parents will receive a formal written response to any application.

Leave of absence

The school will only grant a student a leave of absence in exceptional circumstances. In order to have requests for a leave of absence considered, the school will expect parents to contact the headteacher **in writing** at least **two weeks** prior to the proposed start date of the leave of absence, providing the reason for the proposed absence and the dates during which the absence would be expected to occur.

Any requests for leave during term time will be considered on an individual basis and the student’s previous attendance record will be considered. Where the absence is granted, the headteacher will determine the length of time that the student can be away from school. The school is not likely to grant leaves of absence for the purposes of family holidays.

Requests for leave will not be granted in the following circumstances:

- When a student has recently joined and is settling into the school, unless certain exceptional circumstances apply, e.g. the death of a family member • Immediately before and during assessment periods
- When a student's attendance record shows any unauthorised absence
- Where a student's authorised absence record is already above **10%** for any reason

If term-time leave is not granted, taking a student out of school will be recorded as an unauthorised absence and may result in sanctions, such as a penalty notice. The school cannot grant leave of absence retrospectively; therefore, any absences that were not approved by the school in advance will be marked as unauthorised.

Illness and healthcare appointments

Parents will be expected to make medical or dental appointments outside of school hours wherever possible. Where this is not possible, parents will be expected to obtain approval for their child's absence to attend such appointments as far in advance as is practicable. Parents will be responsible for ensuring their child misses only the amount of time necessary to attend the appointment. Please provide a copy or screenshot of the appointment with the school office.

Performances and activities, including paid work

The school will ensure that all students engaging in performances or activities, whether they receive payment or not, which require them to be absent from school, understand that they will be required to obtain a licence from the LA which authorises the school's absence(s).

Additional arrangements will be made by the school for students engaging in performances or activities that require them to be absent from school to ensure they do not fall behind in their education – this may involve one to one catch-up sessions.

Where a licence has been granted by the LA and it specifies dates of absence, no further authorisation will be needed from the school. Where an application does not specify dates, and it has been approved by the LA, it is at the discretion of the headteacher to authorise the leave of absence for each day. The headteacher will not authorise any absences which would mean that a student's attendance would fall below **90%**. Where a licence has not been obtained, the headteacher will not authorise any absence for a performance or activity.

Religious observance

Parents will be expected to request absence for religious observance at least **two weeks** in advance.

The school will only accept requests from parents for absence on grounds of religious observance for days that are exclusively set apart for religious observance by the relevant religious body. The school will define this as a day where the student's parents would be expected by an established religious body to stay away from their employment to mark the occasion.

The school may seek advice from the religious body in question where there is doubt over the request.

Gypsy, Roma and Traveller absence

Where a student's parent belongs to a community covered by this code and is travelling for occupational purposes, the parent will be expected to request a leave of absence for their child at least **two weeks** in advance. Absences will not be granted for students from these communities under this code for reasons other than travel for occupational purposes.

8. SEND- and health-related absences

The school recognises that students with SEND and/or health conditions, including mental health issues, may face greater barriers to attendance than their peers, and will incorporate robust procedures to support students who find attending school difficult.

In line with the SEND Policy and Supporting Students with Medical Conditions Policy, the school will ensure that reasonable adjustments are made for disabled students to reduce barriers to attendance, in line with any EHC (Education, Health and Care) plans or IHPs (Individual Healthcare Plans) that have been implemented. The school will secure additional support from external partners to help bolster attendance where appropriate.

Where the school has concerns that a student's non-attendance may be related to mental health issues, parents will be contacted to discuss the issue and whether there are any contributory factors to their child's lack of attendance. Where staff have a mental health concern about a student that is also a safeguarding concern, they will inform the Designated Safeguarding Lead and the Child Protection and Safeguarding Policy will be followed. All students will be supported with their mental health in accordance with the school's Social, Emotional and Mental Health (SEMH) Policy.

If a student is unable to attend school for lengthy periods of time due to their health, the school will:

- Inform the LA if a student is likely to be away from the school for more than fifteen school days
- Provide the LA with information about the student's needs, capabilities and programme of work
- Help the student reintegrate at school when they return
- Make sure the student is kept informed about school events and clubs
- Encourage the student to stay in contact with other students during their absence

The school will incorporate an action plan to help any students with SEND and/or health issues cope with the stress and anxiety that attending school may cause them. Such plans will be regularly monitored and reviewed until the student is attending school as normal and there has been signs of significant improvement.

To support the attendance of students with SEND and/or health issues, the school will consider:

- Holding termly meetings to evaluate any implemented reasonable adjustments
- Incorporating a pastoral support plan
- Carrying out strengths and difficulties questionnaire
- Identifying students' unmet needs through the Early Help Assessment
- Using an internal or external specialist
- Ensuring a student can have somewhere quiet to spend lunch and breaktimes
- Implementing a system whereby students can request to leave a classroom if they feel they need time out
- Temporary late starts or early finishes
- Phased returns to school where there has been a long absence
- Small group work or on-to-one lessons
- Tailored support to meet their individual needs

9. Absence in exceptional circumstances

Exceptional circumstances will include when a student is unable to attend because:

- Transport provided by the school, LA or parent is not available and the student's home is not within walking distance.
- There has been widespread disruption to travel services which has prevented the student from attending.
- The student is in custody and will be detained for less than four months.

The use of the 'Y' code for exceptional circumstances will be collected in the school census for statistical purposes.

10. Truancy

Truancy will be considered as any absence of part, or all, of one or more days from school, during which the school has not been notified of the cause behind such absence. All staff will be actively engaged in supporting the regular attendance of students and understand the importance of continuity in each student's learning.

Any student with permission to leave the school during the day must sign out at the **school office** and sign back in again on their return.

Immediate action will be taken when there are any concerns that a student might be truanting. If truancy is suspected, the head teacher is notified, and they will contact the parent to assess the reasons behind the student not attending school.

The following procedures will be taken in the event of a truancy:

- In the first instance, a letter of warning will be sent to the parents of the student, informing them of the truancy and stating that any future occurrences could result in further action being taken.
- If any further truancy occurs, then the school will consider issuing a fixed penalty notice.
- A fixed penalty notice will be considered where there is overt truancy, inappropriate parentally condoned absence, unauthorised holidays in term-time and persistent late arrival at school.

11. Missing children

Students will not be permitted to leave the school premises during the school day unless they have permission from the school. The following procedures will be taken in the event of a student going missing whilst at school:

- The member of staff who has noticed the missing student will inform the headteacher immediately.
- The office staff will also be informed as they will act as a point of contact for receiving information regarding the search.
- A member of staff will stay with the rest of the class, and all other available members of staff will conduct a thorough search of the school premises as directed by the headteacher.
- The following areas will be systematically searched:
 - All classrooms
 - All toilets
 - Changing rooms
 - The library

- Any outbuildings
- The school grounds
- Available staff will begin a search of the area immediately outside of the school premises and will take a walkie talkie/radio with them so they can be contacted.
- If the student has not been found after **15 minutes**, then the parents of the student will be notified.
- The school will attempt to contact parents using the emergency contact numbers provided.
- If the parents have had no contact from the student, and the emergency contacts list has been exhausted, the police will be contacted.
- The missing student's form tutor will fill in an incident form, describing all circumstances leading up to the student going missing.
- If the missing student has an allocated social worker, is a looked-after child, or has any SEND, then the appropriate personnel will be informed.
- When the student has been located, members of staff will care for and talk to the student to ensure they are safe and well.
- Parents and any other agencies will be informed immediately when the student has been located.

The headteacher will take the appropriate action to ensure that students understand they must not leave the premises, and sanctions will be issued if deemed necessary. Appropriate disciplinary procedures will be followed in accordance with the Relationships and Rewards Policy (formerly Behaviour policy).

The headteacher will carry out a full investigation and will draw a conclusion as to how the incident occurred. A written report will be produced, and policies and procedures will be reviewed in accordance with the outcome, where necessary.

12. Attendance intervention

In order to ensure the school has effective procedures for managing absence, the attendance lead, supported by the SLT, will:

- Establish a range of specific, evidence-based interventions to address barriers to attendance.
- Monitor the implementation and quality of escalation procedures and seek robust evidence of the escalation procedures that work.
- Attend or lead attendance reviews in line with escalation procedures.
- Establish robust escalation procedures which will be initiated before absence becomes a problem by:
 - Telephone communications with parents
 - Sending letters to parents

- Having a **weekly** tutor review
- Engaging with LA Access and Inclusion Service
- Using fixed penalty notices
- Creating attendance clinics

The school will use attendance data, in line with the '[Monitoring and analysing absence](#)' section of this policy, to develop specific strategies to improve attendance where patterns of absence are emerging.

These strategies will be developed on a case-by-case basis and will consider the particular needs of the students whom the intervention is designed to target.

The school will aim to improve attendance in the overall school cohort by acknowledging good attendance in the following ways:

- Hot chocolate afternoons with a member of the SLT
- Celebratory communications with home via Arbor, postcards and/or telephone calls

School trips and events will be considered a privilege. Where attendance drops below **90 percent**, these privileges may be taken away. The school will develop strategies for ensuring that students with health needs or home circumstances that result in additional absences are not unfairly excluded from attendance rewards, e.g. by setting individualised targets.

13. Working with parents to improve attendance

The school will work to cultivate strong, respectful relationships with parents and families and work to build trust and engagement. Open and honest communication will be maintained with students and their families about the expectations of school life, attendance and performance so that they understand what to expect and what is expected of them. The school will liaise with other agencies working with students and their families to support attendance, e.g., social services.

The school will ensure that there is **more than one set** of emergency contact details for each student wherever possible to ensure the school has additional options for getting in touch with adults responsible for a student where the student is absent without notification or authorisation.

The school will ensure that parents are aware of their legal duty to ensure that their child attends school regularly and to facilitate their child's legal right to a full-time education – parents will be made aware that this means their child must attend school every day that it is open, save for in certain circumstances, e.g. sickness or absences that have been authorised by the headteacher in advance. The school will regularly inform parents about their child's levels of attendance, absence and punctuality, and will ensure

that parents are aware of the benefits that regular attendance at school can have for their child educationally, socially and developmentally.

If a pattern of absence becomes problematic, the attendance lead will work collaboratively with the student and their parents to improve attendance by addressing the specific barriers that prevent the student from being able to attend school regularly. The school will always take into consideration the sensitivity of some of the reasons for student absence and will approach families to offer support rather than immediately reach for punitive approaches.

Where these barriers are related to the student's experience in school (e.g. bullying), the attendance lead will work with the headteacher and any relevant school staff, e.g. the DSL and SENCO, to address this. Where the barriers are outside of the school's control, e.g. they are related to issues within the student's family, the attendance lead will liaise with any relevant external agencies or authorities (e.g. children's social care or the LA), and will encourage parents to access support that they may need.

14. PA (Persistent Absence) and SA (Severe Absence)

There are various groups of students who may be vulnerable to high absence and PA/SA, such as:

- Children in need
- LAC
- Young carers
- Students who are eligible for FSM
- Students with EAL
- Students with SEND
- Students who have faced bullying and/or discrimination

The school will ensure it provides support to students at risk of PA/SA, in conjunction with all relevant external authorities where necessary.

The school will use a number of methods to help support students at risk of PA/SA to attend school. These include:

- Offering catch-up support to build confidence and bridge gaps in learning
- Meeting with the student and their parent to discuss patterns of absence, barriers to attendance, and any other problems they may be having
- Establishing plans to remove barriers and provide additional support
- Leading **weekly** check-ins to review progress and assess the impact of support
- Making regular contact with the student's parent to discuss progress
- Assessing whether an EHC plan or IHP may be appropriate

- Considering what support for re-engagement might be needed, including with regard to additional vulnerability

The school will focus particularly on students who have rates of absence over 50 percent (SA) and will work with the LA and other partners to engage all relevant services needed to identify and address the wider barriers to attendance these students are facing.

Where a student at risk of PA is also at increased risk of harm, the school will work in conjunction with all relevant authorities, e.g. social services, to support the student in line with the school's duty of care. The school will also bear in mind that the continuation of severe PA following intervention may, in itself, constitute neglect, and will escalate any concerns in this regard in line with the Child Protection and Safeguarding Policy.

15. Legal intervention

The school will allow sufficient time for attendance interventions and engagement strategies to improve students' attendance; however, where engagement strategies to improve attendance have not had the desired effect after **one term**, the attendance lead will consider:

- Holding a formal meeting with parents and the school's point of contact in the Access and Inclusion Service
- Working with the LA to put a parenting contract or an education supervision order in place.
- Engaging children's social care where there are safeguarding concerns

Where the above measures are not effective, the headteacher will consider issuing a fixed penalty notice in line with the LA's code of conduct.

Where attendance still does not improve following a fixed penalty notice or is it has been deemed that a fixed penalty notice is not appropriate, the school will work with the LA to take forward attendance prosecution as a last resort.

16. Monitoring and analysing absence

The attendance lead will monitor and analyse attendance data **weekly** to ensure that intervention and support is delivered quickly to address habitual absence at the first signs.

The school will collect data regarding punctuality, truancy, and authorised and unauthorised absence, for:

- The school cohort as a whole
- Individual year groups
- Year groups preparing for exams
- Individual students

- Demographic groups, e.g. students from different ethnic groups or economic backgrounds
- Other groups of students, e.g. students with SEND, LAC and students eligible for FSM
- Students at risk of PA

The attendance lead will conduct thorough analysis of the above data on a **monthly and yearly** basis to identify patterns and trends. This will include identifying, for each group:

- Patterns in uses of certain codes.
- Particular days of poor attendance.
- Subjects which have low lesson attendance.
- Historic trends of attendance and absence.
- Barriers to attendance.

The attendance lead will provide regular reports to staff across the school to enable them to track the attendance of students and to implement attendance procedures. The attendance lead will also be responsible for monitoring how attendance data changes in response to any interventions implemented to increase attendance in future.

The governing board will regularly review attendance data, including examinations of recent and historic trends, and will support the SLT in setting goals and prioritising areas of focus for attendance support based on this data.

The school will also benchmark its attendance data against local-, regional- and national-level data to identify areas of success and areas for improvement and will share practice which has been shown to be effective with other schools.

17. Training of staff

The school will recognise that early intervention can prevent poor attendance. As such, staff will receive training in identifying potentially at-risk students as part of their induction and refresher training.

The governing board will ensure that teachers and support staff receive training in line with this policy as part of their induction. Following this initial training, staff will be offered regular and ongoing training as part of their CPD opportunities.

Training will cover at least the following:

- The importance of good attendance
- That absence is almost invariably a result of wider circumstances
- The legal requirements on schools, e.g. the keeping of registers

- The school's strategies and procedures for monitoring and improving attendance
- The school's procedures for multi-agency working to provide intensive support for students who need it

The governing board will provide dedicated and enhanced attendance training to the attendance officer and other staff with specific attendance functions in their role – this will include training regarding interpreting and analysing attendance data and supporting students to overcome barriers to attendance.

Staff will receive training to ensure they understand that increased absence from school could indicate a safeguarding concern and know how such concerns should be managed.

18. Monitoring and review

Attendance and punctuality will be monitored throughout the year. The school's attendance target is **96 percent** – full details of the school's absence levels can be found on the **school website**.

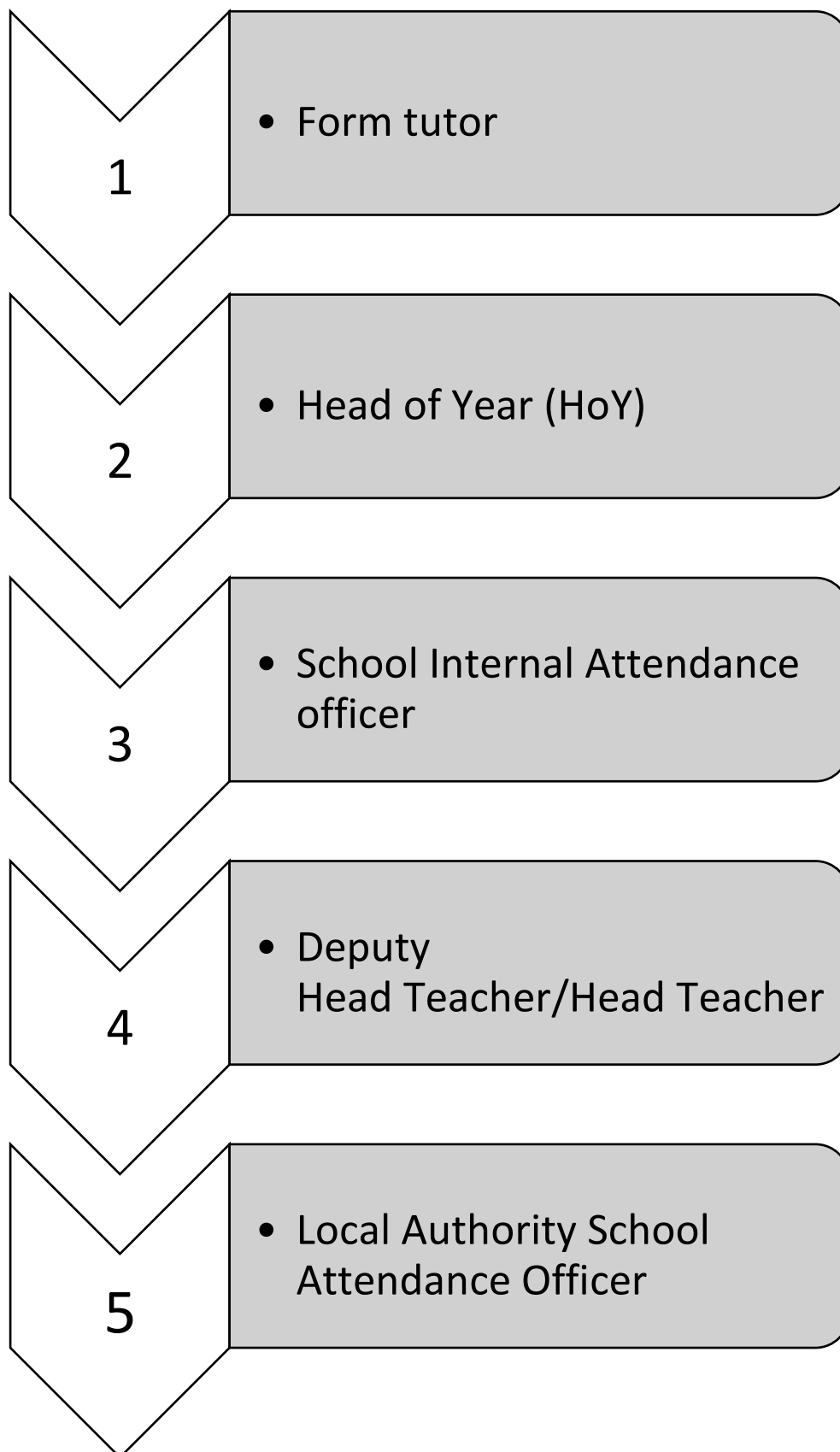
This policy will be reviewed **annually** by the head teacher. The next scheduled review date for this policy is **November 2026**.

Any changes made to this policy will be communicated to all relevant stakeholders.

Attendance Monitoring Procedures

1. Form tutors will receive weekly attendance updates for their form class.
2. Attendance and Punctuality will be discussed between FT and students. Any attendance/punctuality trends noticed by FT should be passed immediately to the relevant Key Stage Leader (KSL) and Attendance Officer.
3. Contact will be made with parents on the first day of absence for any student absence not reported. Second day N codes will be followed up by the School Internal Attendance Officer (SIAO), with contacting home by telephone. Any N codes not established after a week will be recorded as unauthorised absence.
4. Student attendance drops below 95 percent – KSL or Pastoral Support will speak to students to discuss any issues or problems to ascertain how the school can help to improve their attendance. The School Internal Attendance Officer (SIAO) will make a phone call home, if applicable.
5. Student attendance drops below 93 percent – a letter will be sent home raising concerns that attendance has fallen below the school target of 95 percent. The letter will also have a leaflet attached outlining how parents can work with the school and their child to help improve attendance.
6. Student attendance drops below 90 percent – a letter will be sent home explaining that a student's absence is now being monitored. SIAO will contact parents. Attendance monitored for two weeks. If attendance has not improved, then parents will be required to attend a meeting in school with their child's HOY. If parents are unwilling to co-operate, or genuinely unable to attend, a referral may be required to the Local Authority School Attendance Officer (this will be discussed with them prior to accepting a referral).
7. If attendance has not improved within the two-week monitoring period (likely to be close to 85 percent or below), or if attendance has fallen rapidly, parents will be invited to either: a school attendance meeting with KSL, SIAO and if appropriate SENCO, or a medical action planning meeting with the school nurse, HOY SIAO and SENCO. Provision will be discussed, and targets will be set for raising attendance. This will be monitored over a further two-week period.
8. After the two-week monitoring period, if targets are met, a letter will be sent home from the leadership team to congratulate the student and the family.
9. Monitoring and communication with the family will continue until attendance stabilises – if targets are not met, the Key Stage Leader will discuss making a referral to the Local Authority School Attendance Officer.

Attendance Reporting Structure



Attendance Agreement Form Student Attendance Agreement

I agree to attend school and understand the consequences I may face if my attendance drops below 100 percent. I will ensure that the school is made immediately aware of when I will not reasonably be able to attend and will give the school full details of my absence.

As a student of Fulbrook, I am dedicated to:

- Being in attendance every day.
- Always being punctual to school and lessons.
- Informing the school of the reason for any absence.
- Not missing school for trivial reasons.

Student name:	Date:
Member of staff name:	Date:

Parental Attendance Agreement

I understand that it is my responsibility to send my child to school. I agree to send my child to school every day and understand the consequences if I fail to do so. When my child is absent from school due to exceptional circumstances, I will ensure the correct procedures are followed.

Parent name:	Date:
Member of staff name:	Date: